

Daniel Fox

*Inhalation for the horn player*

(2015)

# Performance Notes

(j)



Breath in over the duration of a quarter note.

(d)



Breath out over the duration of a half note.

L on



Air sound with lips on the mouthpiece.

L off



Air sound with lips off the mouthpiece.



A functional inhalation through the horn.



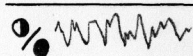
A functional exhalation through the horn.



Pulsed breath on air sound.

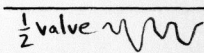


Pulsed breath on a pitch.



(d)

Fix the embouchure for the note in parentheses while fluttering the valves erratically between  $\frac{1}{2}$ - and fully-pressed.



(d)

Erratically wander through the harmonic series of the note indicated in parentheses while holding the valves fixed.

echo

The marked gesture should come across as an echo of a previous gesture.

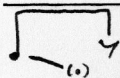
BF - bell forward; BB - bell back; BU - bell up; BO - bell ordinary



Harmonic glissando.



Tongue ram



A parenthetical note at the end of a glissando indicates a destination pitch but should not be given any independent metric existence.

(Transposed)

♩ 60

Horn  
in  
F

Handwritten musical notation for the first system. It includes a treble clef and a key signature of one flat (F). The notation features various dynamics such as *mf*, *ff*, *f*, and *p*. There are also performance markings like *clarinet*, *Bo*, *BF*, *echo*, and *sfz*. The system concludes with a repeat sign.

Handwritten musical notation for the second system. It continues the melodic line with dynamics like *mf*, *p*, and *dim*. Performance markings include *BO*, *BF*, *BO*, *air*, and *echo*. The system ends with a repeat sign.

Handwritten musical notation for the third system. It features triplets and dynamics such as *mf*, *p*, and *mp*. Performance markings include *dolce*, *non dim/cresc.*, and *3*. The system concludes with a repeat sign.

Handwritten musical notation for the fourth system. It includes a treble clef and a key signature of one flat. The notation features various dynamics such as *mp*, *dim*, *f*, and *mp*. There are also performance markings like *echo*, *1/2 valve*, *o → o → o etc.*, and *(Fl)*. The system concludes with a repeat sign.

Handwritten musical notation for the fifth system. It continues the melodic line with dynamics like *p*, *mp*, *f*, and *pp*. Performance markings include *dim.* and *(60")*. The system ends with a repeat sign.

Handwritten musical notation for the sixth system. It features a treble clef and a key signature of one flat. The notation includes dynamics such as *f*, *mf*, *p*, and *mp*. Performance markings include *air*, *L off*, *L on*, and *6*. The system concludes with a repeat sign.



Horn in F

Handwritten musical notation for the first system, featuring a treble clef and a key signature of one flat (F). The notation includes a triplet of eighth notes, a half note with a sharp sign, and various dynamic markings such as *mf*, *f*, *mp*, and *mf*. There are also performance instructions like "dolce" and "1/2 valve".

Handwritten musical notation for the second system, featuring a bass clef. The notation includes a triplet of eighth notes, a half note, and various dynamic markings such as *p*, *f*, *mf*, and *p*. There are also performance instructions like "BU → BD BB" and "air Lon → off".

Handwritten musical notation for the third system, featuring a treble clef. The notation includes a triplet of eighth notes, a half note, and various dynamic markings such as *mf*, *p*, *mf*, and *mp*. There are also performance instructions like "air → etc." and "air Lon → 2h".

(1'50")

Handwritten musical notation for the fourth system, featuring a treble clef. The notation includes a triplet of eighth notes, a half note, and various dynamic markings such as *p*, *f*, *mp*, and *f*. There are also performance instructions like "BO → pitch" and "voice horn".

Handwritten musical notation for the fifth system, featuring a treble clef. The notation includes a triplet of eighth notes, a half note, and various dynamic markings such as *mf*, *p*, *f*, and *ff*. There are also performance instructions like "1/2 valve" and "let ring".

Handwritten musical notation for the sixth system, featuring a treble clef. The notation includes a triplet of eighth notes, a half note, and various dynamic markings such as *p*, *mf*, and *p*. There are also performance instructions like "echo" and "echo".

(2'45")

Horn  
in  
F

Handwritten musical notation for Horn in F. The staff shows a sequence of notes with various dynamics and articulations. Above the staff, there are wavy lines labeled "echo" and "ord". A wavy line with a half valve symbol is labeled "1/2 valve". Below the staff, there are dynamic markings: *mf*, *p*, *mf*, *dim*, *f*, *dim*, and *mp*. There are also slurs and accents.

Handwritten musical notation for Horn in F. The staff shows a sequence of notes with various dynamics and articulations. Above the staff, there are wavy lines labeled "echo" and "ord". A wavy line with a half valve symbol is labeled "1/2 valve". Below the staff, there are dynamic markings: *mf*, *p*, *mp*, *p*, *mf*, *non dim/cresc.*, *mf*, *p*, *mf*, and *p*. There are also slurs and accents.

Handwritten musical notation for Horn in F. The staff shows a sequence of notes with various dynamics and articulations. Above the staff, there are wavy lines labeled "echo" and "ord". A wavy line with a half valve symbol is labeled "1/2 valve". Below the staff, there are dynamic markings: *mf*, *p*, *mp*, *p*, *mf*, *p*, *mp*, *p*, *mf*, *p*, *mp*, and *p*. There are also slurs and accents.

Handwritten musical notation for Horn in F. The staff shows a sequence of notes with various dynamics and articulations. Above the staff, there are wavy lines labeled "echo" and "ord". A wavy line with a half valve symbol is labeled "1/2 valve". Below the staff, there are dynamic markings: *mf*, *dim*, *f*, *dim*, and *mp*. There are also slurs and accents.

Handwritten musical notation for Horn in F. The staff shows a sequence of notes with various dynamics and articulations. Above the staff, there are wavy lines labeled "echo" and "ord". A wavy line with a half valve symbol is labeled "1/2 valve". Below the staff, there are dynamic markings: *mf*, *dim*, *f*, *dim*, and *mp*. There are also slurs and accents.

Handwritten musical notation for Horn in F. The staff shows a sequence of notes with various dynamics and articulations. Above the staff, there are wavy lines labeled "echo" and "ord". A wavy line with a half valve symbol is labeled "1/2 valve". Below the staff, there are dynamic markings: *mf*, *dim*, *f*, *dim*, and *mp*. There are also slurs and accents.